

# MAINTENANCE

## INSPECTING, CLEANING OR PARKING THE ROTARY TILLER



### CAUTION



#### TO PREVENT INJURIES

Always stop the engine and wait for all moving parts to stop before leaving the driver's seat to avoid injuries from the tines.



### WARNING



#### TO PREVENT INJURIES:

Stop the motor.  
Apply parking brakes.  
Remove the ignition key.  
Disconnect the wire from the spark plug(s) and keep away from spark plug(s) to prevent accidental starting.  
Lower the tiller to the ground.



### CAUTION

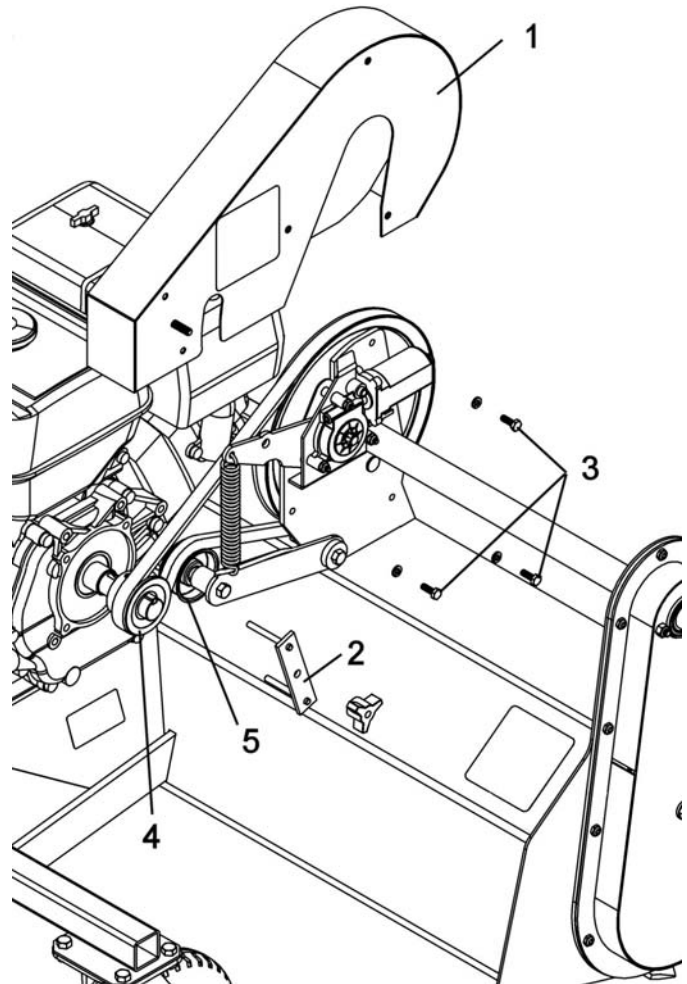


Never use the rotary tiller without the belt guard.

### BELT REPLACEMENT:

For belt part number, refer to parts breakdown section for parts identification.

- Remove the belt guard (item 1), the belt guide stopper (item 2) and the three hex bolts 1/4" x 1/2" (item 3).
- Remove the tension from the belt by pushing on the switch for the belt tensioner (item 5).
- Remove the old belt from the engine pulley (item 4).
- Install the new belt.
- Reinstall the belt guard.
- Apply tension on the belt by pushing the switch for the belt tensioner.
- Reinstall the belt guide stopper.



Belt replacement

**IMPORTANT:** make sure the belt does not rub on the belt guide (item 2) when the belt is engaged.