

MAINTENANCE



WARNING



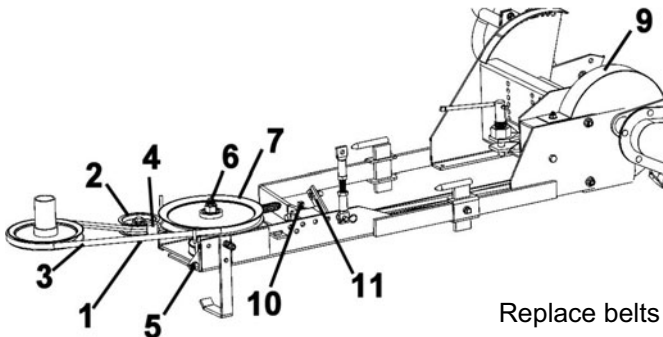
TO PREVENT INJURIES:

Stop the motor.
Apply parking brake.
Remove the ignition key.
Disconnect the wire from the spark plug(s) and keep away from spark plug(s) to prevent accidental starting.

BELT REPLACEMENT:

Primary belt:

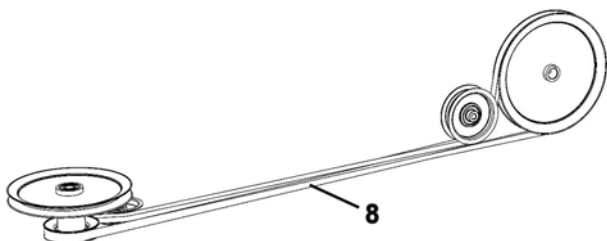
- Remove the belt from engine pulley.
- Remove the bolt (item 1) that holds the idler (item 2).
- Remove the belt (item 3) and reinstall the new one on the double pulley (item 7) as shown.
- Reinstall the idler (item 2) and belt guide (item 4) in the same manner as removed. Make sure the belt guide is 90° with the idler arm.
- Reinstall the belt on the engine pulley.



Replace belts

Secondary Belt:

- Unscrew the belt tension nut (item 5).
- Remove the bolt (item 6) and remove the double pulley (item 7).
- Remove the belt guard (item 9).
- Remove the belt (item 8) and install the new one. Make sure it is routed as shown.
- Reinstall as dismantled by reversing the steps.
- Screw the tension nut to adjust the V-belt until you barely see the hole in the tension gauge.
- See secondary belt adjustment instructions



Secondary belt

PRIMARY BELT ADJUSTMENT

Tractors with an electric clutch mechanism:

Adjust the tension on the front belt by loosening the square head set screw (item 10). Pull the adjustable tension rod (item 11) to stretch the spring by 3/4" to 1". Tighten the screw securely.

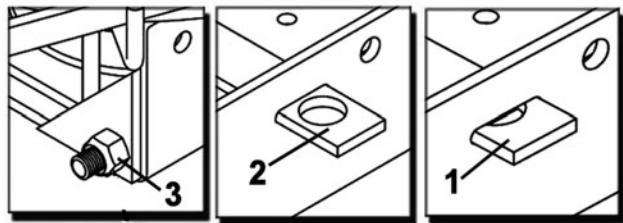
Tractors with a manual clutch mechanism:

Adjust the cable so that the spring is stretched by 3/4" to 1" when the clutch mechanism is engaged.

SECONDARY BELT ADJUSTMENT

When the belt is correctly adjusted, you should barely see the hole in the tension gauge (item 1).

If the hole is exposed (item 2), adjust the belt by screwing the nut (item 3) until well adjusted.



Adjustment

Requires adjustment

Well adjusted

Adjust tension

MAINTENANCE

After every hour:

- Remove trash from the tines if necessary.

After every 4 hours:

- Check belt tension
- Adjust if needed
- Clean under the belt.

After every 8 hours or once a year:

- Grease the tiller drive shaft.

a) Provide adequate blocking before working under the tractor or rotary tiller when in raised position.

b) Check mounting bolts at frequent intervals for proper tightness in order to prevent costly repairs. Make sure your rotary tiller is in good working condition.

MAINTENANCE

REPLACING THE TINES



WARNING



TO PREVENT INJURIES:

Stop the motor.
Apply parking brake.
Remove the ignition key.
Disconnect the wire from the spark plug(s) and keep away from spark plug(s) to prevent accidental starting.

Note: To facilitate replacing the tines, you may remove the tiller from the tractor and turn it upside down.

- Park the tractor safely.
- Raise the tiller as high as it will go and put some blocks under the tiller.

Note: Each group of tines must have two left tines and two right tines.

For reference purposes:

- Alternate left and right tines in each group.
- A bolt with **no spacer** is 3/8 x 1 1/4" long.
- A bolt with **one spacer** is 3/8 x 1 3/4" long.
- A bolt with **two spacers** is 3/8 x 2 1/4" long.

LEFT GROUP OF TINES:

Remove the nuts (item 1), bolts (item 2) spacers (item 3), two left tines (4) and two right tines (item 5).
Install the new tines with same hardware in exactly the same position as the old ones were installed.

MIDDLE GROUP OF TINES:

Remove the nuts (item 6), bolts (item 7), spacers (item 8), two left tines (item 9) and two right tines (item 10).
Install the new tines with same hardware in exactly the same position as the old ones were installed.

RIGHT GROUP OF TINES:

Remove the nuts (item 11), bolts (item 12) spacers (item 13), two left tines (item 14) and two right tines (item 15).
Install the new tines with same hardware in exactly the same position as the old ones were installed.

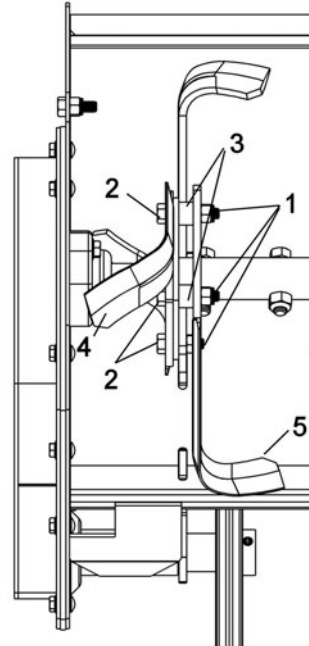


CAUTION

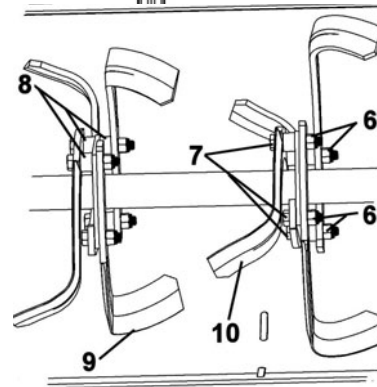


TO PREVENT INJURIES:

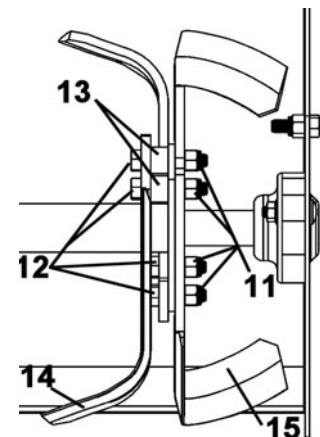
Always safely block the tiller if you have to work under it. It is not recommended to work under the tiller because it could fall on you and cause very serious injuries.



Left group of tines



Middle group of tines



Right group of tines

DISMOUNTING

DISMOUNTING THE ROTARY TILLER



WARNING



TO PREVENT INJURIES:

Stop the motor.

Apply parking brake.

Remove the ignition key.

Disconnect the wire from the spark plug(s) and keep away from spark plug(s) to prevent accidental starting.

On a level surface, park the tractor and apply the parking brake.

- a) Install the pin (item 1) in the locked position.
- b) Lower the tiller to the ground.
- c) Remove the V-belt from the engine pulley (item 9).
- d) Disconnect the clutch cable if installed.
- e) Lower the front support (item 4).
- f) Remove the link (item 8) from the tractor frame.
- g) Raise the tiller's lift arm (item 2) to support the tiller frame.
- h) Unscrew the pin (item 6) from the hitch.
- i) Pull out the tiller from the tractor hitch.
- j) Using the lift arm, lower the tiller to the ground and raise the front support.
- k) Place the lift arm so the tiller rests flat on the ground.
- l) Slide out the tiller from the tractor.

END OF SEASON STORAGE:

- a) Clean the rotary tiller.
- b) Check the belts.
- c) Replace damaged or worn parts.
- d) Paint scratched surfaces to prevent rust.
- e) Lubricate the grease points.
- f) Store the tiller on a hard level surface in a clean, dry place. If tiller must stay outside, wrap it in a waterproof cover.

